



the year of
saving lives
and livelihoods



Annual Impact Report

2021-2022



Shabana Azmi
President, MWS

COVID-19 and the 'new normal' brought about the pandemic's all-encompassing impact that has accentuated inequalities to worrying new levels. The gap between the poor and rich in terms of access to resources has increased more sharply than ever before. Significant numbers of people have been pushed below the poverty line and the 'new poor' have become a major focus of policy debates. Health, economy and education all stand upended by uncertainties which appear to see no end in sight. Millions of children are missing out on education in their most formative years. But by learning the right lessons from the pandemic, Mijwan Welfare Society has reworked its programmes to be part of the solution. It has firmly kept its focus on the poor, vulnerable, and marginal groups who have been disproportionately affected by the pandemic.

As much as 2021 has been a year of grief, it has equally been one of strength and resilience. Necessity has bred courage, innovation and long-term sustainable solutions. While we commend the healthcare workers, police officers, journalists and delivery service staff who provided essential services in these trying times Mijwan Welfare Society also supported the government in creating awareness and providing services to communities directly.

We are truly grateful to all our partners for standing by and having faith in us. Despite the restrictions, our staff were more connected with the ground reality than they were before, both with each other as well as the people and communities they serve. The shift towards digital services was significant and it will continue to shape the way we work as we recover from the pandemic and seize new opportunities to build back. We proudly present the annual impact report accentuating data-based results of the programs implemented by us. I wish to thank all our collaborators, national and international donors for their support without whom we could not have provided relief and rehabilitation to the most vulnerable. Kudos are also due to our team for pulling out all the stops and committing themselves in the service of people, often at the cost of their personal time with their families.



Namrata Goyal
Secretary, MWS

Over the years, economic growth and consistent efforts of social protection programmes in India have helped reduce poverty significantly. Unfortunately, the Covid-19 pandemic has been unprecedented in its impact on the marginalised, reversing this progress and plunging millions into further poverty. It has disrupted the informal economy and impacted both urban and poor communities disproportionately. Communities that Mijwan Welfare Society (MWS) supports face substantive health and livelihood adversities. In response, we did timely intervention and scaled up our sectoral capabilities in health, livelihood, and education, to enable communities to cope with the trials of the pandemic. One of the key interventions in the year 2021-2022 was working with local health authorities and facilitating COVID vaccination in remote villages.

We also significantly scaled up our work to assist marginalised communities. We have increased our Rozgar Dhaba program to 8 new districts which has assisted local communities (especially migrants) to get informed on different government schemes and apply for it (eligible ones) and access to different local livelihood opportunities. On the other hand, we have included digital learning and support in our girl's education programs, recruited new qualified teachers for our school in Mijwan and we have been working closely with teachers, girls and parents in supporting school learning program for rural girls. In collaboration with Pratham Books we have also established school libraries in five government schools and supported with more than 500 books to make these libraries functional. I am also happy to share that our financial transparency has led us to get Gold Certification from Guide Star India and we have received renewals for our FCRA, 80G and 12A certification.

It was a year of learnings, as Mijwan Welfare society undertook a multitude of initiatives to support marginalised communities during these arduous times. We supported the lives of more than half million people through our different livelihood, education and health related projects across 11 districts in Uttar Pradesh. We are grateful to all our partners, government departments, community members for their support in driving the execution of various programmes in this unprecedented environment. We are also deeply indebted to our corporate partners and foundations for the immediate funding to deliver the much-needed assistance to communities and healthcare workers. In addition, the support various state governments, district and municipal administrations provided to us was of immense help in delivering aid where needed. Through deeper collaborations and partnerships with all stakeholders, we envisage building the resilience needed for our communities to navigate disruptions and grow stronger with every blow. Mijwan Welfare Society looks forward to working closely with all its partners and communities to build a better future for all.

A special thanks to our Mijwan Welfare Society team, who worked tirelessly despite the pandemic. It is due to their tireless efforts that we were able to serve the people with commitment. For that, my Board members and I express our deep appreciation. I would also like to share my gratitude to all the MWS family members – our employees, donors, peer organizations, and other stakeholders, who have believed in us and worked selflessly to convert our intentions into realities.



Vinod kumar Pandey
CEO, MWS

COVID-19 started as a health emergency in 2020 and has affected livelihood and lives in the second wave during 2021. The contagion caused immeasurable strain on livelihood opportunities and the health system at the community level. At the same time, Mijwan Welfare Society team in collaboration with the local health authorities has started working on the facilitation of COVID vaccination.

On 28th April 2022, we had our first COVID vaccination facilitation program #COVIDRahat in Azamgarh and further on took the program to 11 more districts in Uttar Pradesh and till 31st March 2022 more than 180000 people from almost 450 villages have received COVID vaccination through facilitation by Mijwan Welfare Society in collaboration with local health authorities. We were among the first few NGOs in India to start collaborating with local health authorities and facilitating COVID vaccination. This has helped to accelerate COVID vaccination in remote rural areas. Kudos to our field team for the brave efforts. Tireless, fearless, and passionate is how I would describe our team members, who let nothing defeat their spirits, not even the deadly pandemic. We worked extensively on sustaining communities' livelihood, providing quality education, and health-related issues.

We have continued our work with rural women artisans and provided work and earnings to them in the form of working on designers' masks, simple three-layered masks, and other chikankari work through our Samridhi program. This has helped rural women artisans to earn an average of INR 4-4.5K per month (for part-time work) and through this, they are able to support their families in this difficult time of COVID-19.

We have used digital technology as well as individual in-person coaching for rural girls studying at Shri Kaifi Azmi Girls Inter College (an initiative of Mijwan Welfare Society) so that they can continue their education. We have introduced three science labs and one home science lab for infusing creativity and innovation among students and added more than 400 books, and 30 digital assets to our school library. We carried out various capacity-building initiatives for women and girls in different parts of Uttar Pradesh and through our Saksham-women entrepreneurship program, we have supported 42 rural women entrepreneurs which has provided a source of earning for 85 community members.

The year 2021-2022 was also the year of expansion. We have started our Rozgar Dhaba Sanjeevani canters in Amethi, Varanasi, Ayodhya, Bareilly, Lucknow, and Prayagraj and has provided assistance to more than 10000 community members on different government schemes and local livelihood opportunities. Our Rozgar Dhaba model has emerged as a public policy solution to solve the issue of implementation of different government schemes and has helped people to know and avail the benefits of government schemes. Though this was not an easy year, it made us stronger and better prepared for the new normal. We have grown more confident that our work matters to society and communities.

Mijwan Welfare Society (MWS)

works with **poor and marginalised community** members especially **women, elderly and children** across



Livelihood
skilling &
food security



Quality
education



Sports



Key areas of work

- Quality education through formal schooling and usage of technology for rural poor and marginalised.
- Informed communities by providing access to information on different livelihood opportunities by migrants' population.
- Empowering local women entrepreneurs through training and material support.
- Identifying and training local sports talent.
- Creating local livelihood opportunities for local communities.

Community reach

750,000
people

55%
female



45%
male



11 districts
in Uttar Pradesh



1 district
*in UP Bihar border
(Buxar)*

450+
villages



Key Approach

- To hire the implementation team from local communities
- To work in collaboration with different stakeholders (including government departments)
- A transparent financial system
- Data and technology-based program monitoring



COVID Response

COVID Rahat : COVID vaccination awareness and facilitation program

28th April 2021 -
31st March 2022



Vaccination in 450+
villages of 11 districts

Key approach

Work in collaboration with local health authorities.

Follow-ups with community on 2nd dose.

Door to door campaign on COVID vaccination awareness and registration for vaccination.



About 55% of COVID response beneficiaries are women and 45% are men.

708,552
people recieved
information on
COVID vaccination

142,414
people recieved first
dose of COVID
vaccination

191,064
registered for
COVID Vaccination

1715
booster dose and
vaccination
facilitation
for 15-18 yr olds

44978
people recieved second
dose of COVID
vaccination

Quality Education

Mijwan Welfare Society through Shri Kaifi Azmi Girls Inter College, Mijwan facilitates quality education for girls from poor and marginalised communities.

Key approach:

Formal schooling from 9th-12th class for girls (affiliated by UP board).

Focus on quality of teaching.

Usage of technology in teaching methodology.

Work with other government schools (upto class 8th).

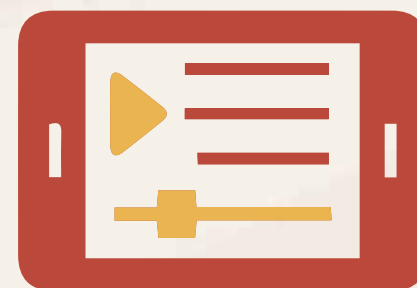


297

girls enrolled
in school

936

teaching
videos
developed



03

meetings with
other schools



100%

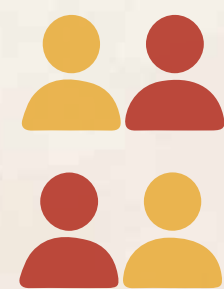
pass in class 10th and 12th
*Shri Kaifi Azmi Girls Inter College,
Mijwan*



6559

number of
offline classes

*including short duration,
one to one classes and home visits*



45

online
classes

*(including short
duration)*



292

Parent Teacher
Meetings (PTM)

1:30

Teacher student
ratio

Rozgar Dhaba model

A local community information hub for livelihood opportunities



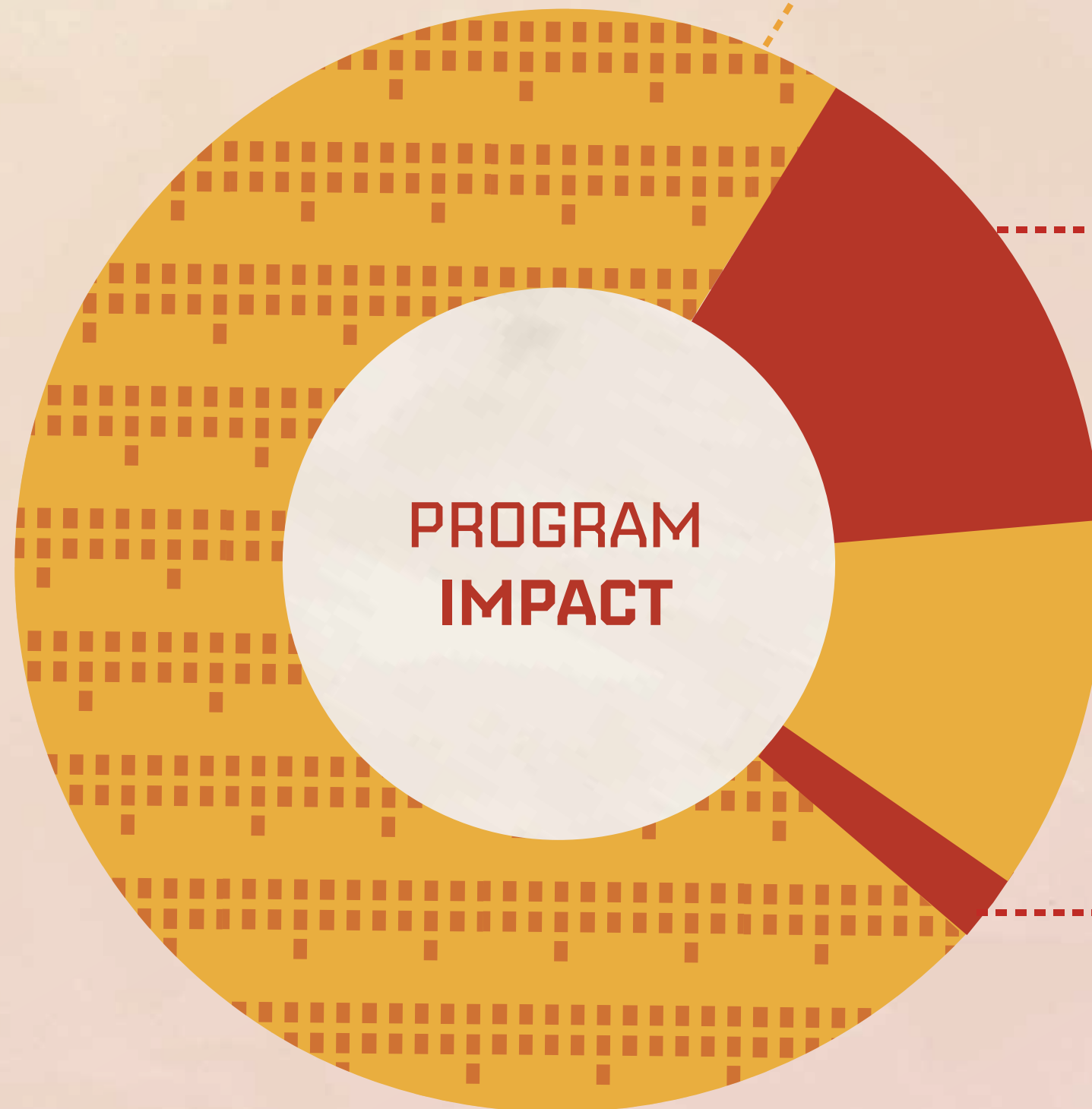
Mijwan Welfare Society through its Rozgar Dhaba model facilitates information and assistance on **different government programs or schemes and local livelihood opportunities** to the communities by

- Making community members aware on different government programs and schemes as well as assisting them on submitting application *(including online and offline applications)*.
- Having a physical space in remote villages, where community members can interact with the Rozgar Dhaba facilitators.
- Provides support and Training to community volunteers to help other community members on different government programs & local livelihood opportunities.
- Organising workshops with communities.



Convergence

Community benefits
to government programs
through MWS team facilitation



Government documents assistance

Aadhar Card, PAN Card,
Ration Card, Voter ID
and Caste certificate

5472 3618

9090

E-Sharmik Card

3580 2387

5967

Bank Account

183 122

305

Total beneficiaries : 15,318



Health Schemes

Ayushman Bharat, services of telemedicine
(government supported)

1848

1232

3080

Total beneficiaries



Livelihood and Income Schemes

Labor card +
housing scheme

1102 735

1837

PM Kisan Samman
Nidhi Scheme

87 129

216

Kanya
Sumangala
Scheme

19

Sukanya
Scheme

74

Total beneficiaries : 2174



Social Security Schemes : Pensions

Widow pension
schemes

51 29

80

Old age pensions
schemes

176 116

292

Disability pension
schemes

2 10

12

Total beneficiaries : 378

Total fund leverage is about INR 1,000,000 (approx) through the benefit
of different government schemes to different community members

Sustainable livelihood

Empowering rural women
artisans and entrepreneurs



Train local communities in
Chikankari work and
entrepreneurship



Create work opportunities for
rural women artisans and
trained entrepreneurs



Long term
mentoring



42 rural women
entrepreneurs
trained



5,000- 5,500 INR

Average monthly
income of rural women
entrepreneurs
(during COVID)



85
jobs created by rural
women entrepreneurs



450
rural women
artisans trained

4,000- 4,500 INR

Average monthly
income of rural
artisans
(during COVID for partime work)



2000
cotton masks

Community Campaigns

Mijwan Welfare Society has organized different community campaigns on different themes which include handwash, usage of sanitary pads, protection from cold waves during winter, and dry ration distribution.

Handwash campaign

1793

handwash soaps distributed

21

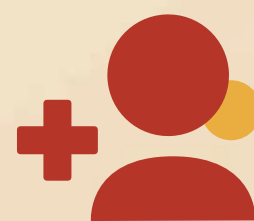
handwash workshops held for community members



Women health and hygiene

597

Sanitary pads packet distributed



16

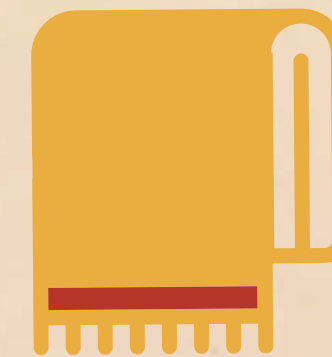
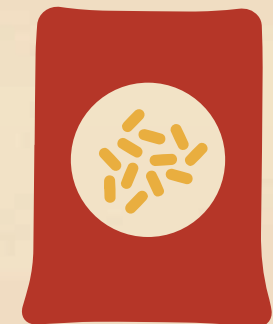
workshops organized on women health issues (in collaboration with local Aangawadi/ASHA worker)



Dry ration and Blanket distribution

1700

Blankets distributed



7270 kgs

dry ration distributed among

727 beneficiaries



These campaigns have benefited more than 10000 community members in 200+ villages across 11 districts in Uttar Pradesh.

Vritta

Kalyan Bhadarsa,
Ayodhya



Impact stories

Neetu

Azamgarh



At 71 yrs old, Vritta was struggling to get the old-age pension for the last 10 years.

Mijwan Welfare Society **Rozgar Dhaba** Ayodhya team assisted her in opening her bank account and then applied for her old-age pension and now Vritta is getting INR 500/- per month as an old-age pension.

Through Mijwan Welfare Society **#RozgarDhaba** we are bringing smiles to many faces by making access to government welfare schemes easy and hassle-free.

Neetu is a mother of three kids and a wife of a migrant worker. During the distressing days of lockdown, she came back from Mumbai where her husband worked.

Neetu's life changed when she enrolled herself at **Mijwan Welfare Society Samridhi** training for women entrepreneurs (supported by Share & Care Foundation Samridhi project). She learnt chikankari in less than a month during the lockdown, since then she is continuously supporting her family through the earnings she gets from working at Mijwan Welfare Society Samridhi center.

Neetu said that this has become possible only because of the quality training and livelihood support she has received from Mijwan Welfare Society.

Our key supporters and memberships

CSR / Indian donors



MANISH MALHOTRA



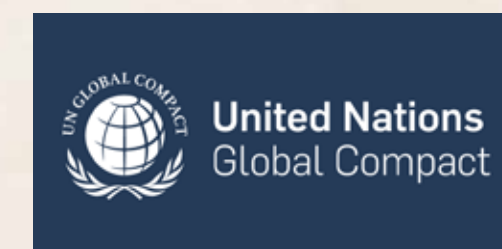
Academy / Capacity building Institutions



International donors



Membership



Validations



Donors quote

During the COVID-19 pandemic, Home of Hope Inc. was a key Donor towards the MWS COVID-19 relief efforts. Thank you to our generous donors - Dr.Narayan Verma, Shail Lal and Meenakshi Narain, HOH was able to launch a Legacy program to honour their donations that **benefited the Village's vaccination program which was laser focused , data-centric, and replicable.** This Noble humanitarian effort has impacted hundreds of remote villages.

This program was successful because of the **dedication , integrity and honesty and commitment of the Mijwan team and its leader Vinod Pandey.** Everyone on this team is passionate about the purity of the goal to make a difference.

HOH feels extremely fortunate to partner with such a great NGO. We commend SHABANA AZMI for being the ICONIC leader and driving change in the empowerment of the village of Mijwan and neighbouring villages.

Nilima Sabharwal,
Founder Home of Hope, USA.

I have known Mijwan Welfare Society for a few decades and am familiar with their activities. As I do have experience of dealing with many NGOs and many projects since 1980, I know that when you do humanitarian work, sometimes the results achieved are not above the benchmark despite best efforts.

The case with Mijwan is very different, as the results from their work are exceptional, rewarding and of course above the standards. If we see the activities of any charitable foundation as investment for humanity, certainly I can say that investment with Mijwan is above five stars. When a donor finds a vehicle to take the donation yielding greater outcome, it is a win - win situation for all involved. I can recall many instances where I was positively surprised, however, our recent dealing during the pandemic was most impressive.

The 2020 -21 Covid pandemic was very unusual and as these circumstances and sufferings were never seen by anyone alive. We were totally lost on how to reach out and where to begin. **Mijwan rescued us by not only providing us with much needed guidance but also with excellent execution of the project. The creation of the project, its implementation, cost consciousness; hands-on approach, results and reporting were all above our expectations.**

Mijwan has raised the bar of the charitable world. Congratulations to the fine people involved at Mijwan.

Best wishes,
Dr. Ketki Shah



FORM NO. 10B

[See Rule 17B]

**Audit Report under section 12A (b) of the Income-tax Act, 1961 in the case of
charitable or religious trusts or institutions**

We have examined the balance sheet of MIJWAN WELFARE SOCIETY AABTM2538G [name and PAN of the trust or institution] as at 31/03/2022 and the Profit and loss account for the year ended on that date which are in agreement with the books of account maintained by the said trust or institution

We have obtained all the information and explanations which to the best of our knowledge and belief were necessary for the purposes of the audit. In our opinion, proper books of account have been kept by the head office and the branches of the above-named institution visited by us so far as appears from our examination of the books, and proper Returns adequate for the purposes of audit have been received from branches not visited by us subject to the comments given below:

In our opinion and to the best of our information, and according to information given to us the said accounts give a true and fair view: -

- in the case of the balance sheet of the state of affairs of the above-named institution as at 31/03/2022
- in the case of the profit and loss account, of the profit or loss of its accounting year ending on 31/03/2022

The prescribed particulars are annexed hereto.

For MNY AND COMPANY
Chartered Accountants

(MOHAMMAD NOMAN)
FCA
Membership No: 405593
Registration No: 0119500W

Place :AZAMGARH

Date : 01/09/2022

UDIN : 22405593ARCCFT6405



**ANNEXURE
STATEMENT OF PARTICULARS**

Application of income for charitable or religious purposes.

1.	Amount of income of the previous year applied to charitable or religious purposes in India during that year.	16639737
2.	Whether the institution has exercised the option under clause (2) of the Explanation to section 11 (1)? If so, the details of the amount of income deemed to have been applied to charitable or religious purposes in India during the previous year.	No
3.	Amount of income Accumulated or set apart for application to charitable or religious purposes, to the extent it does not exceed 15 per cent of the income derived from property held under trust in part only for such purposes.	4389945
4.	Amount of income eligible for exemption under section 11(1)(c) [Give details]	No
5.	Amount of income, in addition to the amount referred to in item 3 above, accumulated or set apart for specified purposes under section 11(2)	8238620
6.	Whether the amount of income of mentioned in item 5 above has been invested or deposited in the manner laid down in section 11(2)(b)? If so, the details thereof.	No
7.	Whether any part of the income in respect of which an option was exercised under clause (2) of the Explanation to section 11(1) in any earlier year is deemed to be income of the previous year under section 11(B)? If so, the details thereof.	No
8.	Whether, during the previous year, any part of income accumulated or set apart for specified purposes under section 11(2) in any earlier year :-	
a.	has been applied for purposes other than charitable or religious purposes or has ceased to be accumulated or set apart for application thereto, or	No
b.	has ceased to remain invested in any security referred to in section 11(2)(b)(i) or deposited in any account referred to in section 11(2)(b)(ii) or section 11(2) (b) (iii), or	No
c.	has not been utilised for purpose for which it was accumulated or set apart during the period for which it was to be accumulated or set apart, or in the year immediately following the expiry thereof? If so, the details thereof	No

II. Application or use of income or property for the benefit of persons referred to in section 13 [3].

1.	Whether any part of the income or property of the institution was lent, or continues to be lent, in the previous year to any person referred to in section 13(3) (hereinafter referred to in this Annexure as such person)? If so, give details of the amount, rate of interest charged and the nature of security, if any.	NO
2.	Whether any land, building or other property of the institution was made, or continued to be made, available for the use of any such person during the previous year? If so give details of the property and the amount of rent or compensation charged, if any.	NO



MIJWAN WELFARE SOCIETY
VILL.- & P.O. - MIJWAN, PHOOLPUR, AZAMGARH
Balance Sheet as on 31.03.2022

Society Funds Account

As per last account 70,052,796.50
Add:- Income for the year 12,626,564.80 82,679,361.30

Fixed Assets

As per Schedule 11,060,207.55

Investment

F.D.R. With S.B.I. Mumbai 39,002,966.00
Interest on FDR 3,334,339.00 42,337,305.00

Current Assets

TDS F.Y. 2015-16 352394.00
TDS F.Y. 2016-17 345107.00
TDS F.Y. 2017-18 344112.00
TDS F.Y. 2018-19 374330.00
TDS F.Y. 2019-20 338319.00
TDS F.Y. 2020-21 247076.00
TDS F.Y. 2021-22 333440.00 2334778.00

Closing Balance

Cash With Bank (Annexure attached) 26,982,112.82
Cash in Hand 73663.93 27,055,776.75

82,788,067.30

82,788,067.30

For Mijwan Welfare Society

Secretary

For MNY And Company
Chartered Accountants

(CA Mohammad Noman)
Partner
MN: 405593

431A, Bazbahad
Azamgarh

In terms of our report of even date annexed.



MIJWAN WELFARE SOCIETY
VILL.- & P.O. - MIJWAN, PHOOLPUR, AZAMGARH
Income & Expenditure Account For the year ended 31.03.2022

Expenditure

By Project Remuneration Exp 5,558,440.00
" Electric Exp 142,157.00
" Staff Refreshment Expenses 25,010.00
" Repair & Maintenance exp 994,957.00
" Shri Kaifi Azmi Girls Inter College Exp 727,039.00
" Travelling & conveyance 130,553.00
" Printing & Stationery Expenses 66,571.00
" Genral exp 392,087.00
" Professional charges 1,748,440.00
" Samridhi Project expenses 655,588.00
" Rates & tax expenses 74,219.00
" Rozgar Dhaba Expenses 615,769.11
" ICE Materials Exp 607,072.00
" Bank Charges 17,855.97
" Rent 59,198.00
" Shri kaifi azmi chikankari & society 2,331,815.00
" Shri kaifi azmi sport academy project exp 18,390.00
" Shri kaifi azmi computer center exp 116,044.00
" Maa Ki Roti Project Exp 719,312.00
" Audit Fees Payble 41,300.00
" Depreciation Expenses 1,397,508.52
" Fixed Assets Right Off 200,411.00
(As per Shedule)

" Exces of Income over Expenditure transferred to society's funds a/c 12,626,564.80

29,266,301.40

Income

To Shri Kaifi Azmi Girls Inter College 954,888.00
" Shri Kaifi Azmi Swing & Chikankari 20,300.00
" Interest on F.D.R. 46,268.00
" Interest on F.D.R. 3,667,779.00
" **Donation**
" Home of hope 2,982,616.00
" Share and Care Foundation 8,054,304.00
" It Will Be 260,829.00
" Kind Karma Foundation 126,098.00
" Bente haulund Madsem 22,280.00
" Niine Foundation 1,622,000.00
" Amar Tulsyan 400,000.00
" Mr. Surendra Gupta S/o Dulichand 500,000.00
" Manish Malhotra 2,776,513.00
" Harshman 301,399.00
" United Way Mumbai 2,298,520.00
" Developing Indigenous 1,180,000.00
" Population Foundation PFI 1,150,000.00
" Rotary club of Mumbai Elegant 500,000.00
" Ma Foundation 1,286,000.00
" General Donation 1,085,015.40
" Community Contribution 31,492.00

29,266,301.40

For Mijwan Welfare Society

Secretary

For MNY And Company
Chartered Accountants

(CA Mohammad Noman)
Partner
MN: 405593

431A, Bazbahadur
Azamgarh

In terms of our report of even date annexed.



MIJWAN WELFARE SOCIETY
VILL.- & P.O. - MIJWAN, PHOOLPUR, AZAMGARH
Receipts & Payments account for the year ended 31.03.2022

<u>Receipts</u>	<u>Amount</u>	<u>Payments</u>	<u>Amount</u>
To Opening Balance		By Project Remuneration Exp	5,537,447.00
Cash With Bank	16,391,435.50	„ Electric Exp	142,157.00
S.B.I.Phoolpur (FDR)	900,000.00	„ Staff Refreshment Expenses	25,010.00
Cash in Hand	53834.00	„ Repair & Maintenance exp	994,957.00
„ Shri Kaifi Azmi Girls Inter College	954,888.00	„ Shri Kaifi Azmi Girls Inter College Exp	727,039.00
„ Shri Kaifi Azmi Swing & Chikankari	20,300.00	„ Travelling & conveyance	130,553.00
„ Interest on F.D.R.	46,268.00	„ Printing & Stationary Expenses	66,571.00
„ Donation		„ Genral exp	392,087.00
„ Home of hope	2,982,616.00	„ Professional charges	1,748,440.00
„ Share and Care Foundation	8,054,304.00	„ Samridhi Project expenses	655,588.00
„ It Will Be	260,829.00	„ Rates & tax expenses	74,219.00
„ Kind Karma Foundation	126,098.00	„ Rozgar Dhaba Expenses	607,902.18
„ Bente hauland Madsem	22,280.00	„ ICE Materials Exp	607,072.00
„ Niine Foundation	1,622,000.00	„ Bank Charges	17,855.97
„ Amar Tulsyan	400,000.00	„ Rent	59,198.00
„ Mr. Surendra Gupta S/o Dulichand	500,000.00	„ Shri kaifi azmi chikankari & society	2,331,815.00
„ Manish Malhotra	2,776,513.00	„ Shri kaifi azmi sport academy project exp	18,390.00
„ Harshman	301,399.00	„ Shri kaifi azmi computer center exp	116,044.00
„ United Way Mumbai	2,298,520.00	„ Maa Ki Roti Project Exp	719,312.00
„ Developing Indigenous	1,180,000.00	„ Duties & Taxes	1,859.00
„ Population Foundation PFI	1,150,000.00	„ Purchases of Mobile	14,499.00
„ Rotary club of Mumbai Elegant	500,000.00		
„ Ma Foundation	1,286,000.00	„ Closing Balance	
„ General Donation	1,085,015.40	Cash With Bank (Annexure attached)	26,982,112.82
„ Community Contribution	31,492.00	S.B.I.Phoolpur (FDR)	900,000.00
		Cash in Hand	73,663.93

42,943,791.90

42,943,791.90

In terms of our report of even date annexed.

For MNY And Company
Chartered Accountants
(CA Mohammad Noman)
Partner
MN. 405593
431A, Bazbahadur
Azamgarh

For Mijwan Welfare Society

Secretary



MIJWAN WELFARE SOCIETY
VILL.- & P.O. - MIJWAN, PHOOLPUR, AZAMGARH
Schedule of Fixed Assets As on 31.03.2022

Particulars	Balance as on 01.04.2021	Addition During the Year > 180 the Year < 180 Total	Dep Rate %	Dep.	Closing Balance 31.03.2022
Building	9,685,320	-	10%	968,532	8,716,788
Computer & Printer	243,343	-	40%	97,337	1,46,006
Inverter & Battery	222,981	-	15%	33,447	189,534
Electric Fitting & Stabilizer	55,839	-	15%	8,376	47,463
Furniture	719,735	-	10%	71,973	647,761
School Building	56,224	-	10%	5,622	50,601
Almirah	46,144	-	15%	6,922	39,222
Equipments	168,400	-	15%	25,260	143,140
Motor Cycle	32,314	-	15%	4,847	27,467
Bus	797,196	-	15%	119,579	677,617
CC.T.V.	67,497	-	15%	10,125	57,372
R.O. System & Cooler	56,224	-	15%	8,434	47,790
Mobile	63,814	14,499	15%	11,747	66,566
Badrinath Court Building	198,414	-	10%	19,841	178,573
Bike	49,773	-	15%	7,466	42,307
Total	12,40,217	14,499		1,397,509	11,004,208

DETAIL OF BANK

S.B.I. F.C.R.A. A/c No.10986476143
S.B.I. A/c 7378
S.B.I. Mumabi A/c 30953774727
S.B.I A/C 17608

11,782,363.93	
1,322,672.78	
7,388,163.08	
<u>6,488,913.03</u>	26,982,112.82

S.B.I A/C 17608

MILWAN WELFARE SOCIETY
PRESIDENT

Nandu oia

MILWAN WELFARE SOCIETY
SECRETARY



MIJWAN WELFARE SOCIETY
VILL. - & P.O. - MIJWAN, PHOOLPUR, AZAMGARH
Write Off Schedule of Fixed Assets As on 31.03.2022

Particulars	Balance as on 01.04.2021						Closing Balance 31.03.2022
Sewing Machine	10,371						10,371
Refrigerator + AC	27,902						27,902
Washing Machine	2,845						2,845
Fire Extinguisher	42,377						42,377
Summer Sable	9,180						9,180
Miscellaneous Articles	3,243						3,243
LED TV	23,514						23,514
Sports Kit	30,988						30,988
Solar Tube well	49,991						49,991
Total	200,411						200,411

Handwritten signature: *Naresh Kumar*

Stamp: MIJWAN WELFARE SOCIETY PRESIDENT

Stamp: MIJWAN WELFARE SOCIETY SECRETARY



DETAIL OF BANK

S.B.I. F.C.R.A. A/c No.10986476143
 S.B.I. A/c 7378
 S.B.I. Mumabi A/c 30953774727
 S.B.I A/C 17608

11,782,363.93
 1,322,672.78
 7,388,163.08
6,488,913.03 26,982,112.82

Nannada





MIJWAN WELFARE SOCIETY

VILL.- & P.O. - MIJWAN, PHOOLPUR, AZAMGARH
Write Off Schedule of Fixed Assets As on 31.03.2022

Particulars	Balance as on						Closing Balance
	01.04.2021						31.03.2022
Sewing Machine	10,371						10,371
Refrigerator + A.C	27,902						27,902
Washing Machine	2,845						2,845
Fire Extinguisher	42,377						42,377
Summer Sable	9,180						9,180
Miscellaneous Articles	3,243						3,243
LED TV	23,514						23,514
Sports Kit	30,988						30,988
Solar Tube well	49,991						49,991
Total	200,411						200,411

Nannada





MIJWAN WELFARE SOCIETY
VILL.- & P.O. - MIJWAN, PHOOLPUR, AZAMGARH

DETAIL OF FORM 10 AY 2022-23

PARTICULARS	AMOUNT
<u>INCOME</u>	29266301.40
<u>APPLICATION OF INCOME</u>	
A- AS PER INCOME & EXPENDITURE	16639736.60
B- ACCUMULATION U/S 11 (1) -15% OF THE INCOME- BALANCE	4389945.00
C- ACCUMULATION U/S 11 (2)	8236619.80
FORM 10 TO BE FILED BEFORE ITR FILLING	
TOTAL APPLICATION	29266301.40

For MIJWAN WELFARE SOCIETY

Manager/Secretary



In terms of our report of even date annexed.

for MNY And Company

Chartered Accountants

Azamgarh

(CA. Mohammad Noman)

Chartered Accountant

431A, Bazbahadur

Azamgarh

Partner

MN. 405593

Mijwan Welfare Society board members

Shabana Azmi, Namrata Goyal, Dr. Akhilesh Yadav, Sitaram, Sanyogita Prajapati,
Kakul Hai, Ali Sanjar, Sushma Pandit, Vikas Kumar Yadav

www.mijwan.org
email: ceo@mijwan.org
Mijwan, Azamgarh

Mijwan Welfare Society Team

Amit, Aniket, Amit, Aman, Adnan, Ashutosh, Ayasa, Bijay, Bhagirathi, Diksha, Huma, Jugun Tara,
Jai Kisan, Jyoti, Kusum, Lallan, Ladali Bano, Manoj, Manoj, Mithesh, Motin, Mritunjay, Meena, Motin,
Om Prakash, Pankaj, Pragya, Prem, Pradeep, Priyanka, Pratiksha, Rajesh, Renu, Roli, Rishabh, Rampher,
Sandeep, Sambhunath Saraswati, Sudhir, Surybind, Santosh, Surender, Samina, Sheela, Susheela,
Suryabind Sunil, Suresh Saleha, Suneeta, Sangeeta, Tripti, Usha, Virendra, Vinod.



Report Design
www.maanasishankar.com